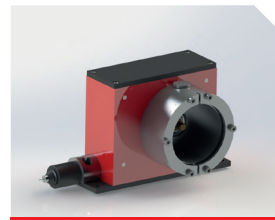


# DRAW WIRE SYSTEMS

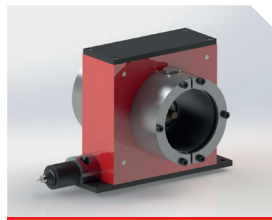
## LINEAR MEASUREMENT



**SERIE EM4 / EM4 FX**

90.1404 / 90.1404.FX

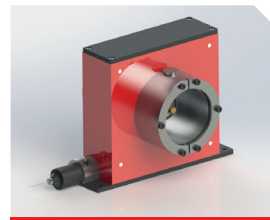
≤ 4.000 mm  
≤ 1 m/s  
200 mm ±0,06 / turn



**SERIE EM8 / EM8 FX**

90.1808 / 90.1808.FX

≤ 8.000 mm  
≤ 0,75 m/s  
250 mm ±0,06 / turn



**SERIE EM10 / EM10 FX**

90.1810 / 90.1810.FX

≤ 10.000 mm  
≤ 0,75 m/s  
300 mm ±0,06 / turn



**SERIE XT12**

XT12-10000 / XT12-15000

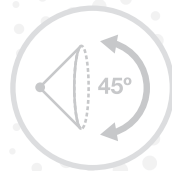
≤ 15.000 mm  
≤ 10 m/s  
300 mm / turn



**SERIE XT18**

XT18-20000 / XT18-50000

≤ 50.000 mm  
≤ 10 m/s  
500 mm / turn

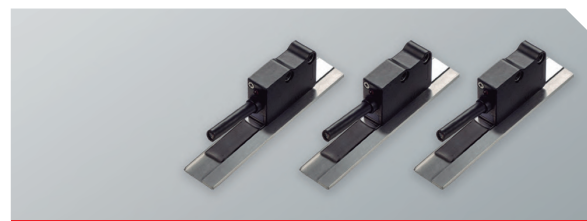


Draw wire systems allow to operate a rotary sensor of any type, for the measurement of linear distances:

- + Incremental Optical Encoder
- + Multiturn Absolute Optical Encoder
- + Multiturn Absolute Magnetic Encoder
- + Potentiometer

# MAGNETIC SENSOR SYSTEMS

## LINEAR MEASUREMENT



SERIE	MSL	MSM	MSH
Accuracy	Incremental ± 50 µm	Incremental ± 8 µm	Incremental ± 6 µm
Pole pitch	5+5	2+2	1+1
Resolution*	100 µm	10 µm	5 µm
Protection	IP67	IP67	IP67



SERIE VIMS	
Accuracy	Incremental ± 20 µm
Pole pitch	2+2
Resolution	Programmable
Protection	IP67 / IP43



SERIE MSA	SSI
Accuracy	Absolute ± 15 µm
Pole pitch	2+2
Resolution	10 µm
Protection	IP67

(\* Other resolutions available, upon request.



**BARCELONA**  
C/ Dolors Bassa, 3 (P.I. Cal Batlle)  
17400 Breda (Girona), Spain

**FRANKFURT**  
Hainstraße 50  
63526 Erlensee, Germany

Tel. (00 34) 972 160 017  
info@encoderhohner.com  
www.encoderhohner.com



“ your  
**encoder**  
experts  
—  
since **1983**

With more than 35 years of experience, HOHNER AUTOMATION, the sole spanish optical encoders manufacturer, from its headquarter based in Breda (Girona province), designs, manufactures, commercialize and supports its customers in the development of industrial automation projects.

Our own departments of optical, mechanical and electronic manufacturing allow us to offer to our customers free engineering services with maximum efficacy and fast delivery time.

It is our flexibility and adaptability, coupled with our ethos of engineering, manufacturing excellence and quality concern, which has placed HOHNER AUTOMATION at the forefront of the best encoders manufacturers in the world.



your encoder experts

BARCELONA | www.encoderhohner.com | FRANKFURT

# INCREMENTAL ENCODERS

## SOLID SHAFT



# INCREMENTAL ENCODERS

## HOLLOW SHAFT



# ABSOLUTE ENCODERS

## SINGLETURN & MULTITURN



<p><b>SERIE 10 / 10A</b></p> <p>≤ 50.000 ppr IP65 / IP67 Cable or connector</p> <p>58 mm 6..12 mm</p>	<p><b>SERIE 58 / 58S</b></p> <p>≤ 50.000 ppr / 2.048 ppr IP65 / IP67 Cable or connector</p> <p>58 mm 6 mm</p>	<p><b>SERIE 64 / 64S</b></p> <p>≤ 10.000 ppr / 2.048 ppr IP54 Cable</p> <p>58 mm Conic 1:10</p>	<p><b>SERIE 30 / 30A</b></p> <p>≤ 50.000 ppr IP65 / IP67 Cable or connector</p> <p>90 mm 12 mm</p>
<p><b>SERIE 10K INOX</b></p> <p>≤ 50.000 ppr IP69K Cable</p> <p>58 mm 10 mm</p>	<p><b>SERIE 10I INOX</b></p> <p>≤ 50.000 ppr IP67 Cable</p> <p>58 mm 10 mm</p>	<p><b>SERIE 100 / 100 DUO</b></p> <p>≤ 5.000 ppr IP66 Cable or connector</p> <p>115 mm 11 mm</p>	<p><b>SERIE 30I INOX</b></p> <p>≤ 50.000 ppr IP67 Cable</p> <p>90 mm 12 mm</p>
<p><b>SERIE 66</b></p> <p>≤ 10.000 ppr IP64 Cable or connector</p> <p>58 mm Thread M8</p>	<p><b>SERIE 50</b></p> <p>≤ 5.000 ppr IP65 Cable or connector</p> <p>50 mm 6..10 mm</p>	<p><b>SERIE 36</b></p> <p>≤ 10.000 ppr IP65 Cable or connector</p> <p>36,5 mm 6 mm</p>	<p><b>SERIE 26 / 27</b></p> <p>≤ 4.096 ppr IP64 Cable</p> <p>24 mm 4..6 mm</p>
<p><b>SERIE PR90</b></p> <p>≤ 65.536 ppr IP65 Cable or connector</p> <p>58 mm 6..10 mm</p>	<p><b>SERIE 11</b></p> <p>≤ 2.500 ppr IP65 Cable</p> <p>58 mm 10 mm</p>	<p><b>SERIE 20</b></p> <p>≤ 1.024 ppr IP54 Cable</p> <p>58 mm 6 mm</p>	<p><b>SERIE 21</b></p> <p>≤ 500 ppr IP41 Cable</p> <p>40 mm 6 mm</p>

<p><b>SERIE 59 / 59A / 59S</b></p> <p>≤ 50.000 ppr / 2.048 ppr IP65 / IP67 Cable or connector</p> <p>58 mm 10..14 mm</p>	<p><b>SERIE 19 / 19A</b></p> <p>≤ 50.000 ppr IP65 / IP67 Cable or connector</p> <p>58 mm 6..15 mm</p>	<p><b>SERIE 77</b></p> <p>≤ 5.000 ppr IP65 Cable or connector</p> <p>77 mm 15..25 mm</p>	<p><b>SERIE 80</b></p> <p>≤ 5.000 ppr IP65 Cable or connector</p> <p>100 mm 30..42 mm</p>
<p><b>SERIE 50HI INOX</b></p> <p>≤ 5.000 ppr IP67 Cable</p> <p>55 mm 6 mm</p>	<p><b>SERIE 19K</b></p> <p>≤ 50.000 ppr IP69K Cable</p> <p>58 mm 6..15 mm</p>	<p><b>SERIE 100H / 100H DUO</b></p> <p>≤ 5.000 ppr IP66 Cable or connector</p> <p>100 mm 12..16 mm</p>	<p><b>SERIE 130M</b></p> <p>≤ 2.048 ppr IP68 Connector</p> <p>134 mm 16..36 mm</p>
<p><b>SERIE PR90H</b></p> <p>≤ 65.536 ppr IP65 Cable or connector</p> <p>58 mm 10..15 mm</p>	<p><b>SERIE 50H</b></p> <p>≤ 5.000 ppr IP65 Cable or connector</p> <p>50 mm 6..12 mm</p>	<p><b>SERIE 22 / 22H</b></p> <p>≤ 10.000 ppr IP64 / IP50 Cable or connector</p> <p>36,5 mm 6..8 mm</p>	<p><b>SERIE 28</b></p> <p>≤ 4.096 ppr IP64 Cable</p> <p>24 mm 4..8 mm</p>
<p><b>SERIE MIE</b></p> <p>1 ppr IP67 Cable</p> <p>54 mm 15 mm</p>	<p><b>SERIE MR</b></p> <p>1 ppr IP67 Cable</p> <p>105..160 mm 11..19 mm</p>	<p><b>SERIE 22M</b></p> <p>≤ 512 ppr IP65 Cable</p> <p>36,5 mm 10..12 mm</p>	

### SSI ABSOLUTE ENCODERS

> Singleturn resolution up to 21 bits  
> Multiturn resolution up to 38 bits  
> Solid, blind hollow or hollow shaft  
> Binary, Gray codes. Configurable via cable or switch  
> Up to IP67. Cable or connector output

**SERIE E36 CS / CM SSI**

Singleturn ≤ 14 bits  
Multiturn ≤ 24 bits  
IP64  
Cable

36..90 mm  
36,5 mm  
6 mm

### ABSOLUTE + INCREMENTAL ENCODERS

> Singleturn resolution up to 19 bits  
> Incremental resolution 2.048 SIN/COS  
> BISS-C or SSI + SIN/COS or SIN/COS + SIN/COS  
> Solid, conical, blind hollow or hollow shaft  
> Up to IP65. Cable or connector output

58 mm

### ANALOG ABSOLUTE ENCODERS

> Analogical output 4..20mA, 0..20mA or 0..10V  
> Singleturn or multiturn, 10 or 12 bits resolution  
> Solid, blind hollow or hollow shaft  
> Cable configurable direction  
> Up to IP67. Cable or connector output

58..90 mm

### PARALLEL ABSOLUTE ENCODERS

> Singleturn or multiturn  
> Solid or hollow shaft  
> Configurable: reset or direction  
> Up to IP67. Cable or connector output

58..90 mm

### ABSOLUTE ENCODERS FIELDBUS

> Hohner Automation is offering all the Fieldbus encoders, Profibus, Profinet, DeviceNet, CanOpen, CANlift, EtherCAT, EtherNet/IP, Interbus, Modbus/TCP, TCP/IP, Powerlink

PROFIBUS, PROFINET, DeviceNet, EtherNet/IP, CANopen, EtherCAT

### ACCESSORIES

> Flexible couplings  
> Coupling flanges  
> Mounting bells  
> Connectors  
> Measuring wheels  
> Antirotaion systems  
> Pre-assembled cables  
> Support angles

① RANGE OF TEMPERATURE -20°C..+85°C / OPTIONAL -40°C..+100°C POWER SUPPLY 5V / 11..30V / OPTIONAL 5..24V